

KENFLO[®] 肯富來

Liquid Ring Vacuum
Pumps and Compressors



Valid Period: 2008-2009



Obtaining ISO9001 Quality System Certificate
Registered by FM Approvals America
and Vouching Technical Inspection Ltd.

GUANGDONG FOSHAN PUMP FACTORY CO.,LTD.

Kenflo-Over 40 years' experience in vacuum engineering

Since we designed and produced the first energy-saving vacuum pump/compressor with highest capacity in China, Kenflo vacuum pumps and compressors have proven their worth in various industrial applications for more than 40 years. All appreciated by:

Quality Control

Stringent quality control under ISO9001 and detailed quality plan-all the way from the selection of the raw material to the final acceptance test ensures that it gives years of faultless service for Kenflo pump:

- Every Kenflo pump undergoes rigorous inspections during every stage of production.
- Every pump is 100% performance tested before dispatch.
- Routine chemical and mechanical properties tests with metallographical analysis on the parts of pumps.

Various Materials Options

In addition to the standard material, Kenflo pumps use various higher quality materials to serve variety of process demands and more aggressive applications, and to provide the benefits of longer life, higher efficiency and reliable operation.

The options include:

- All SS304 or SS316 or SS316L stainless steel construction.
- Super Epoxy Bonded Fusion-corrosion proof coating used in wet ends.
- Ductile cast iron.
- Standard material-high grade of cast iron/steel.

Flexible Offer

Kenflo pumps provide pre-engineered packages with extra equipment to meet process requirements, the package could include:

- Electric motor, gearbox, baseplate, pulleys and belts.
- Seal water recirculation systems with heat exchangers.
- Air ejector for higher vacuum applications.
- Seal water controls & discharge air/water separator.
- OEM requirements

Wide Range of Applications

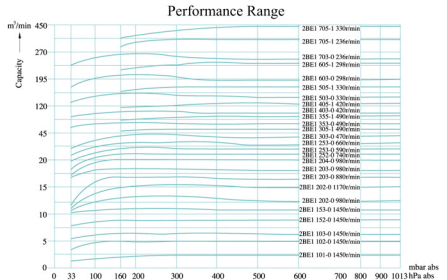
Kenflo pumps can be found in applications such as:

- Power station-condenser Exhausting and fly ash handling
- Paper industry-water removal in paper production
- Mining-methane extraction, vacuum filtration and vacuum forming
- Food production-boiling process, drying and pickup & conveying
- Hospital and process plants-central vacuum systems
- Timber industry-chemical impregnation
- Textile industry-vacuum dewatering, distillation and chemical impregnation
- Solvent recovery plants-solvent recovery
- Petroleum chemical industries-vacuum distillation and gas stripping

Series 2BE1

Key Features:

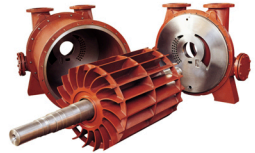
- Updated to cover 22 models, it permits more optimum matching to wide operating application than before.
- Vacuums to 33mbar, if fixed with air ejector, more higher vacuum can be obtained.
- Available in corrosion-resistant material construction. Big size can be upgraded with SEBF coating at little cost.
- Shaft sealing can be mechanical seal or water lubricated stuffing box.
- Self-adjusting discharge port enable the pump adjusted automatically to the actual vacuum and ensure that the pump always works at high efficiency.
- Inspection holes enable easy internal inspection of the pump when inspection is due.
- Cavitation protection can be supplied for those operating condition where cavitation is likely to occur.
- Automatic drain valve avoid the start-up at over-level.
- The use of inlet spray nozzles provides one best engineering approach to condense vapor ahead of the pump, this will achieve the increase of inlet capacity and efficiency.



Model Designation:

2BE1 70 3 - 0

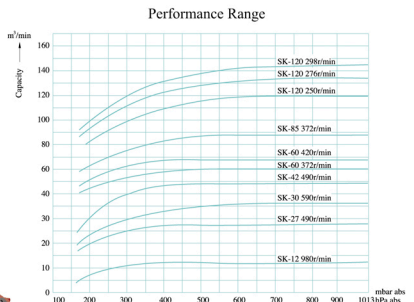
- Code for lowest suction pressure
- "0" – up to 33 mbar abs
- "1" – up to 160 mbar abs
- The ratio of width to diameter of the impeller
- Nominal impeller diameter in cm
- Model prefix



Series SK(2YK)

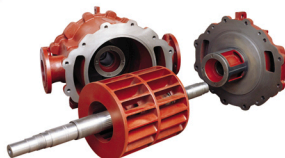
Key Features:

- Single stage double piston actions.
- Columnar porting design.
- Radial suction and discharge.
- Simple adjustment of internal clearances and allowance for wear.
- Robust construction.



Model Designation:

- SK - 42
- Pump size
 - Model prefix



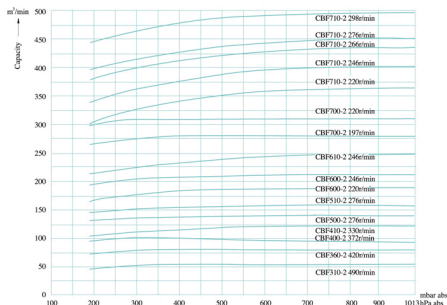
Series CBF-New Line of Innovative Liquid Ring Vacuum Pumps



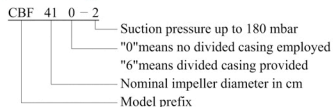
Key Features:

- Special hydraulic profile for high efficiency.
- Significant energy saving with extremely wide range of inlet pressure from 200mbar-1013mbar abs.
- Self-adjusting discharge port ensures always optimum efficient and smooth operation.
- Inspection openings enable easier internal inspection of the pump at any time without dismantling.
- Automatic drain valve protect the pump from start-up at over-level of service liquid.
- Pumps can be supplied with divided casing applied to suit operating condition with different suction pressures.
- Extremely reliable for continuous operation with low noise level.

Performance Range



Model Designation:



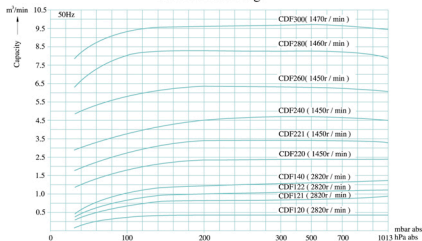
Series CDF



Key Features:

- Single stage Monoblock construction.
- Maintenance-free mechanical seal.
- The impeller is always made of bronze, thus improving the corrosion resistance as well as the wear which could be caused by cavitation, while strongly increasing the reliability.
- Vacuum relief valve prevent cavitation when operated at high vacuum.
- Vacuums to 33 mbar suction pressure.
- Suction capacity up to 600m³/h.

Performance Range

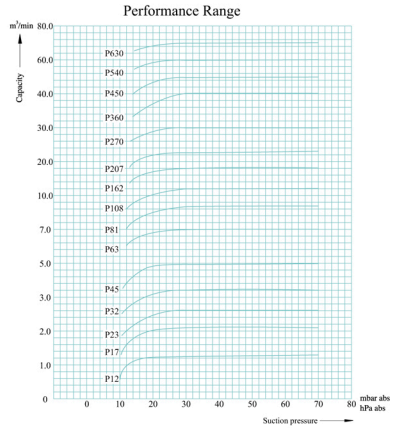


Series 2BE1+P pumps staged with air ejector

Type P air ejector provided to fit with Series 2BE1 pumps for suction pressure down to 8mbar abs.

Key Features:

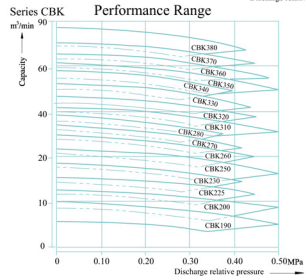
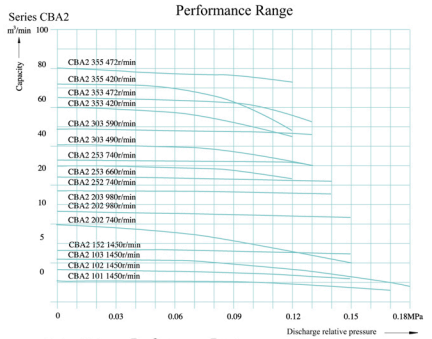
- More suction capacity available when suction pressure less than 60mbar abs.
- Simple, rugged reliable and trouble-free.
- Ejector can be available in cast iron or SS316 stainless steel.



Series CBA2, CBK Compressors

Key Features:

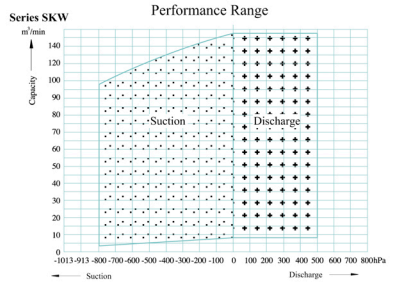
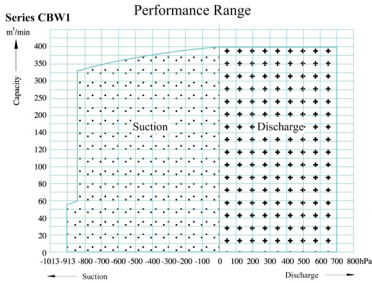
- Axial suction and discharge.
- Only one rotating part.
- Reconfigured wet ends profile for long lift operating.
- High energy saving and low maintenance.
- Suitable for handling flammable/Corrosive process steams.



Series CBWL₁ - SKW Vacuum Compressors

Key Features:

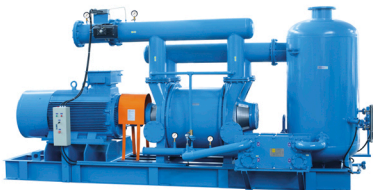
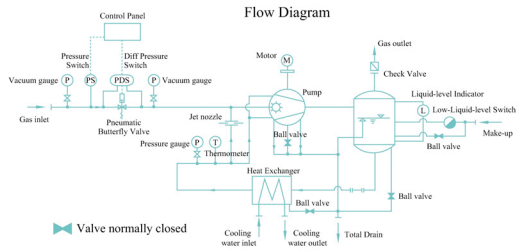
- Combine negative pressure suction and compression discharge.
- Suitable for applications where explosive, flammable, noxious and/or corrosive gas involved.
- Different compression level can be provided with the same speed.
- Special designed W type separator employed, easy to adjust the level of seal water.



Series BW4 Vacuum Package-Condenser-Exhauster Systems

This arrangement is designed for condenser hogging and holding service in power generation. The systems:

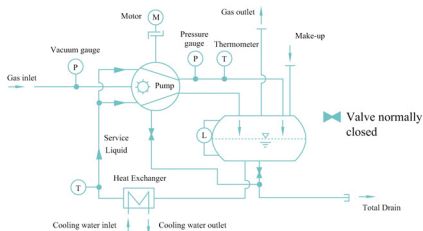
- Consist of liquid ring vacuum pump, separator, heat exchanger and ejector(optional).
- With total recirculation.
- Provide cavitation protection.
- Operate simply and automatically.
- Perform reliably over the entire condenser operating range.
- Service friendly



Series 2BW5, 2BW6, 2BW7 Vacuum Package-Chemical Process Systems



Flow Diagram



2BW5-special design for various chemical processes, it features:

- Flexible combination to fit specific requirements.
- Provides total recirculation as heat exchanger employed. Besides water, glycol, diesel, DOP or others can be used as service liquid.
- Air and liquid are separated through separator, air then be discharged to specified point and liquid can be recirculated as service liquid. Thus it is very suitable to evacuate explosive, flammable, noxious and/or corrosive gas.
- Provided with manual and automatic liquid level control options.

2BW6 - employed type CBW1 Vacuum Compressor and with total recirculation

2BW7 - employed type CBW2 Compressor and with total recirculation

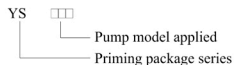
Series YS Priming Package



■ Series YS:

- Serve as self priming for centrifugal pump instead of depending on foot valve
- Automatic control for the startup of priming system and centrifugal pump can be obtained

■ Model Designation:



Other Arrangements



Further information:

GUANGDONG FOSHAN PUMP FACTORY CO., LTD.

Add: No.14, Hebin Road, Foshan City, Guangdong, P. R. China 528000

Import & Export Dept

Tel: +86 757 82801021 82813427 82801097

Fax: +86 757 82837225

Website: www.kenflo.com

E-mail: overseas@kenflo.com